

# WaterMaster 85 Evo

Direct gas fired condensing water heater.



- > Can deliver large peak and continuous volumes of hot water
- > Operates in most efficient mode (fully condensing)
- > Reduces legionella risk due to temperature stored at > 60°C
- > Small footprint allows installation in tight plantrooms
- > Low maintenance with no anode protection required
- > Compliant with latest Ecodesign regulations for DHW
- > Corrosion-resistant stainless steel heat exchanger and tank reduces maintenance and increases system lifespan
- > Suitable for vented or unvented systems (optional Systempak 3 unvented kit required. Kit includes 25l expansion vessel, tundish, pressure control valve, combined pressure reducing set, and vessel mounting bracket.)
- > Easy to use standardised controls using ACVMax control system
- > Compatible for use with LPG and natural gas
- > Supplied with factory fitted T&P relief valve for ease of installation
- > Improved access for service and maintenance
- > 5-year warranty\*

## Tank-in-tank technology

- > **Fast** heat up
- > **Rapid** recovery
- > **Reduced** footprint
- > **Reduced** scale
- > **Low** storage required
- > **Minimal** heat loss



## ACV UK Ltd

St. David's Drive, St. David's Business Park, Dalgety Bay, Fife, KY11 9PF  
uk.sales@acv.com | acv.com

\*Terms & conditions available at [www.acv.com/gb/warranties](http://www.acv.com/gb/warranties).

# Technical data and dimensions



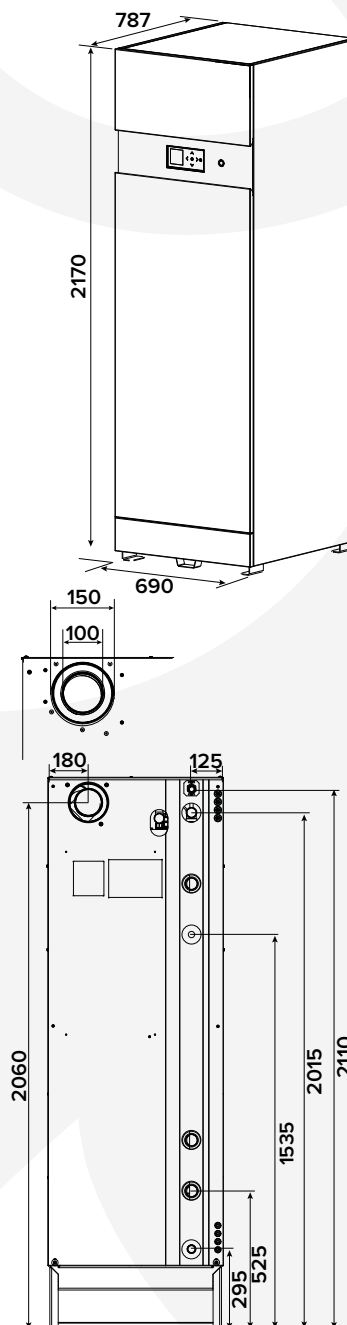
TYPE	UNIT	WM85 Evo
Part number		XB660005
Fuel		Natural gas
Input max (heating) HCV	kW	95.3
Input min (heating)	kW	24.5
Capacity (total)	L	315
Capacity (domestic hot water)	L	190
Efficiency at 100% load (gross) (EN89)	%	98.0
Efficiency at 100% load (nett) (EN89)	%	107.7
Efficiency at 30% load	%	103.9
Connection - DHW	Ø"	1 M
Connection - gas	Ø"	¾ M
Flue connection	Ømm	100/150
Water pressure drop boiler at $\Delta t = 20^{\circ}\text{C}$	mbar	14
Gas flow rate (max output)	m³/h	9.0
Gas flow rate (min output)	m³/h	2.6
Max operating temperature	°C	87
Max service pressure heating (primary)	bar	3
Max service pressure (DHW)	bar	8.6
Weight (empty)	kg	298
Voltage	V	230
Pre-heating time from 10 to 80°C (Heat source: boiler)	min	24
Standby loss $\Delta T$ 30K	kWh/day	2.64
Standby loss $\Delta T$ 45K	kWh/day	3.94
Standby loss $\Delta T$ 30K	W	110
Standby loss $\Delta T$ 45K	W	164
Declared load profile		XXL
Water heating energy efficiency (EU 814/2013)	%	85
NOx class (EN15502)		6
NOx weighted (GCV) (EN15502)	mg/kWh	27.0
Sound power level indoors LWA (BSEN15036-1)	dB	61

## Domestic hot water performance

TYPE	UNIT	WM85 Evo
Peak flow at 40°C	L/10'	783
Peak flow 1st hour at 40°C	L/60'	2895
Continuous flow at 40°C	L/h	2534
Peak flow at 45°C	L/10'	646
Peak flow 1st hour at 45°C	L/60'	2456
Continuous flow at 45°C	L/h	2172
Peak flow at 60°C	L/10'	371
Peak flow 1st hour at 60°C	L/60'	1638
Continuous flow at 60°C	L/h	1520

This data assumes an incoming mains water temperature of 10°C.

\*In line with the recommendations specified in UK Building Regulations (2016) Part G, ACV UK Ltd advise the installation of a suitable domestic hot water thermostatic mixing valve on the hot flow immediately after the appliance.



All dimensions in mm.

Clearances	(minimum)
Top	300mm
Left side	600mm
Right side	250mm
Rear	400mm

Every effort has been taken to ensure the details are accurate. ACV UK Limited does not, however, guarantee the accuracy or completeness of any information nor does it accept liability for any errors or omissions in the information. ACV UK Limited reserves the right to make changes and improvements which may necessitate alteration to product specification without prior notice.